



5. <sup>33</sup>  
I *mf*  
<sup>37</sup>

6. <sup>41</sup>  
I *mf*  
<sup>45</sup>

7. <sup>49</sup>  
I *mf*  
<sup>53</sup>

8. <sup>57</sup>  
I *mf*  
<sup>61</sup>

*Handwritten scribble*

# NYSSMA Sight Reading Level: I

1. Time Signature: 4/4
2. Range: 5th (Usually Do to Sol)
3. Intervals: None. All notes will move by step
4. Rhythms: Half notes ( ) and Quarter notes ( ).
5. Rests: None

1.

I

5 *mf*

2.

I

9 *mf*

13

3.

I

17 *mf*

21

4.

I

25 *mf*

29

5. <sup>33</sup>

*mf*

<sup>37</sup>

I

6. <sup>41</sup>

*mf*

<sup>45</sup>

I

7. <sup>49</sup>

*mf*

<sup>53</sup>

I

8.

*mf*

<sup>61</sup>

I

# NYSSMA Sight Reading Level: II

1. Time Signature: 4/4, 2/4
2. Range: 6th (Usually Do to La or Ti to Sol)
3. Intervals: Do-Mi-Sol (Ascending on quarter notes)
4. Rhythms: Half notes ( ) and Quarter notes ( ).
5. Rests: Quarter rest ( )

1.

II

mf

5

Detailed description: This exercise consists of two staves of music in 4/4 time. The first staff begins with a treble clef and a 4/4 time signature. It contains five measures of music: four quarter notes (C4, D4, E4, F4) followed by a quarter rest. The second staff begins with a treble clef and a 2/4 time signature. It contains five measures: a quarter rest, followed by four quarter notes (G4, A4, B4, C5), and ends with a double bar line.

2.

II

mf

9

13

Detailed description: This exercise consists of two staves of music in 4/4 time. The first staff begins with a treble clef and a 4/4 time signature. It contains five measures: four quarter notes (C4, D4, E4, F4), a quarter rest, and a quarter note (G4). The second staff begins with a treble clef and a 2/4 time signature. It contains five measures: a quarter rest, followed by four quarter notes (A4, B4, C5, B4), and ends with a double bar line.

3.

II

mf

17

21

Detailed description: This exercise consists of two staves of music in 4/4 time. The first staff begins with a treble clef and a 4/4 time signature. It contains five measures: four quarter notes (C4, D4, E4, F4), a quarter rest, and a quarter note (G4). The second staff begins with a treble clef and a 2/4 time signature. It contains five measures: a quarter rest, followed by four quarter notes (A4, B4, C5, B4), and ends with a double bar line.

4.

II

mf

25

29

Detailed description: This exercise consists of two staves of music in 4/4 time. The first staff begins with a treble clef, a key signature of one flat (Bb), and a 4/4 time signature. It contains five measures: four quarter notes (C4, D4, E4, F4), a quarter rest, and a quarter note (G4). The second staff begins with a treble clef and a 2/4 time signature. It contains five measures: a quarter rest, followed by four quarter notes (A4, B4, C5, B4), and ends with a double bar line.

5.

II

33 *mf*

37

6.

II

41 *mf*

45

7.

II

49 *mf*

53

8.

II

57 *mf*

61

# NYSSMA Sight Reading Level: II

1. Time Signature: 4/4, 2/4
2. Range: 6th (Usually Do to La or Ti to Sol)
3. Intervals: Do-Mi-Sol (Ascending on quarter notes)
4. Rhythms: Half notes ( ) and Quarter notes ( ).
5. Rests: Quarter rest ( )

1.

II

5 *mf*

Detailed description: This exercise consists of two staves of music in bass clef. The first staff starts at measure 5 with a 4/4 time signature. It contains four measures of music: the first two measures have quarter notes G2, A2, B2, C3; the third measure has quarter notes D3, E3, F3, G3; and the fourth measure has quarter notes A3, B3, C4, D4. The second staff continues from measure 9 with a 2/4 time signature. It contains four measures: the first measure has quarter notes E4, F4, G4, A4; the second measure has quarter notes B4, C5, D5, E5; the third measure has quarter notes F5, G5, A5, B5; and the fourth measure has quarter notes C6, B5, A5, G5. The piece ends with a double bar line.

2.

II

9 *mf*

13

Detailed description: This exercise consists of two staves of music in bass clef. The first staff starts at measure 9 with a 4/4 time signature. It contains four measures: the first measure has quarter notes G2, A2, B2, C3; the second measure has quarter notes D3, E3, F3, G3; the third measure has quarter notes A3, B3, C4, D4; and the fourth measure has quarter notes E4, F4, G4, A4. The second staff continues from measure 13 with a 2/4 time signature. It contains four measures: the first measure has quarter notes B4, C5, D5, E5; the second measure has quarter notes F5, G5, A5, B5; the third measure has quarter notes C6, B5, A5, G5; and the fourth measure has quarter notes F5, E5, D5, C5. The piece ends with a double bar line.

3.

II

17 *mf*

21

Detailed description: This exercise consists of two staves of music in bass clef. The first staff starts at measure 17 with a 4/4 time signature. It contains four measures: the first measure has quarter notes G2, A2, B2, C3; the second measure has quarter notes D3, E3, F3, G3; the third measure has quarter notes A3, B3, C4, D4; and the fourth measure has quarter notes E4, F4, G4, A4. The second staff continues from measure 21 with a 2/4 time signature. It contains four measures: the first measure has quarter notes B4, C5, D5, E5; the second measure has quarter notes F5, G5, A5, B5; the third measure has quarter notes C6, B5, A5, G5; and the fourth measure has quarter notes F5, E5, D5, C5. The piece ends with a double bar line.

4.

II

25 *mf*

29

Detailed description: This exercise consists of two staves of music in bass clef. The first staff starts at measure 25 with a 4/4 time signature and a key signature of one flat (Bb). It contains four measures: the first measure has quarter notes G2, A2, B2, C3; the second measure has quarter notes D3, E3, F3, G3; the third measure has quarter notes A3, B3, C4, D4; and the fourth measure has quarter notes E4, F4, G4, A4. The second staff continues from measure 29 with a 2/4 time signature. It contains four measures: the first measure has quarter notes B4, C5, D5, E5; the second measure has quarter notes F5, G5, A5, B5; the third measure has quarter notes C6, B5, A5, G5; and the fourth measure has quarter notes F5, E5, D5, C5. The piece ends with a double bar line.

5. <sup>33</sup>

II

Musical notation for exercise 5, measures 33-40. The first staff (measures 33-36) and second staff (measures 37-40) are in bass clef, 4/4 time, and B-flat major. The dynamic marking *mf* is present. The melody consists of quarter and eighth notes.

6. <sup>41</sup>

II

Musical notation for exercise 6, measures 41-48. The first staff (measures 41-44) and second staff (measures 45-48) are in bass clef, 4/4 time, and B-flat major. The dynamic marking *mf* is present. The melody consists of quarter and eighth notes.

7. <sup>49</sup>

II

Musical notation for exercise 7, measures 49-56. The first staff (measures 49-52) and second staff (measures 53-56) are in bass clef, 4/4 time, and D major. The dynamic marking *mf* is present. The melody consists of quarter and eighth notes.

8.

II

Musical notation for exercise 8, measures 57-64. The first staff (measures 57-60) and second staff (measures 61-64) are in bass clef, 4/4 time, and D major. The dynamic marking *mf* is present. The melody consists of quarter and eighth notes.



# NYSSMA Sight Reading Level: III

1. Time Signature: 4/4, 2/4, 3/4
2. Range: 6th (Usually Do to La or Ti to Sol)
3. Intervals: Do-Mi-Sol (Ascending on quarter notes)
4. Rhythms: Half notes ( ), Quarter notes ( ), and Eighth notes ( )
5. Rests: Quarter rest ( )

1.

III

mf

5

Detailed description: This exercise consists of two staves of music in 4/4 time. The first staff begins with a treble clef and a key signature of one flat (Bb). The melody starts on G4, moving up by quarter notes: G4, A4, Bb4, C5, D5, E5, F5, G5. There is a quarter rest on the eighth measure. The second staff continues the melody from the eighth measure: G5, F5, E5, D5, C5, Bb4, A4, G4. The piece ends with a double bar line.

2.

III

mf

9

13

Detailed description: This exercise consists of two staves of music in 3/4 time. The first staff begins with a treble clef and a key signature of one flat (Bb). The melody starts on G4, moving up by quarter notes: G4, A4, Bb4, C5, D5, E5, F5, G5. There is a quarter rest on the eighth measure. The second staff continues the melody from the eighth measure: G5, F5, E5, D5, C5, Bb4, A4, G4. The piece ends with a double bar line.

3.

III

mf

17

21

Detailed description: This exercise consists of two staves of music in 4/4 time. The first staff begins with a treble clef and a key signature of one flat (Bb). The melody starts on G4, moving up by quarter notes: G4, A4, Bb4, C5, D5, E5, F5, G5. There is a quarter rest on the eighth measure. The second staff continues the melody from the eighth measure: G5, F5, E5, D5, C5, Bb4, A4, G4. The piece ends with a double bar line.

4.

III

mf

25

29

Detailed description: This exercise consists of two staves of music in 2/4 time. The first staff begins with a treble clef and a key signature of two flats (Bb, Eb). The melody starts on G4, moving up by quarter notes: G4, A4, Bb4, C5, D5, E5, F5, G5. There is a quarter rest on the eighth measure. The second staff continues the melody from the eighth measure: G5, F5, E5, D5, C5, Bb4, A4, G4. The piece ends with a double bar line.

5. <sup>33</sup>  
*mf*  
<sup>37</sup>

III

6. <sup>41</sup>  
*mf*  
<sup>45</sup>

III

7. <sup>49</sup>  
*mf*  
<sup>53</sup>

III

8. <sup>57</sup>  
*mf*  
<sup>61</sup>

III

# NYSSMA Sight Reading Level: III

1. Time Signature: 4/4, 2/4, 3/4
2. Range: 6th (Usually Do to La or Ti to Sol)
3. Intervals: Do-Mi-Sol (Ascending on quarter notes)
4. Rhythms: Half notes ( ), Quarter notes ( ), and Eighth notes ( )
5. Rests: Quarter rest ( )

1.

III

5 *mf*

2.

III

9 *mf*

13

3.

III

17 *mf*

21

4.

III

25 *mf*

29

5. 33

III

37 *mf*

Detailed description: This exercise consists of two staves of music. The first staff begins at measure 33 and ends at measure 37. The second staff begins at measure 37 and ends at measure 41. The music is written in bass clef with a 3/4 time signature and a key signature of one flat (B-flat). The melody in the first staff starts on G2 and moves stepwise up to D3, then descends. The second staff continues the melody, ending on G2. The dynamic marking is mezzo-forte (mf).

6. 41

III

45 *mf*

Detailed description: This exercise consists of two staves of music. The first staff begins at measure 41 and ends at measure 45. The second staff begins at measure 45 and ends at measure 49. The music is written in bass clef with a 3/4 time signature and a key signature of one flat (B-flat). The melody in the first staff starts on G2 and moves stepwise up to D3, then descends. The second staff continues the melody, ending on G2. The dynamic marking is mezzo-forte (mf).

7. 49

III

53 *mf*

Detailed description: This exercise consists of two staves of music. The first staff begins at measure 49 and ends at measure 53. The second staff begins at measure 53 and ends at measure 57. The music is written in bass clef with a 4/4 time signature and a key signature of one sharp (F#). The melody in the first staff starts on G2 and moves stepwise up to D3, then descends. The second staff continues the melody, ending on G2. The dynamic marking is mezzo-forte (mf).

8.

III

57 *mf*

61

Detailed description: This exercise consists of two staves of music. The first staff begins at measure 57 and ends at measure 61. The second staff begins at measure 61 and ends at measure 65. The music is written in bass clef with a 2/4 time signature and a key signature of one sharp (F#). The melody in the first staff starts on G2 and moves stepwise up to D3, then descends. The second staff continues the melody, ending on G2. The dynamic marking is mezzo-forte (mf).

# NYSSMA Sight Reading Level:IV

1. Time Signature: 4/4, 2/4, 3/4
2. Range: Octave (Usually Do to Do)
3. Intervals: Do-Mi-Sol (Ascending on quarter notes)  
Do-Sol (Ascending on quarter notes)
4. Rhythms: Half notes ( ), Quarter notes ( ), and Eighth notes ( )
5. Rests: Quarter rest ( )

1.

IV

5 *mf*

12 *f*

2.

IV

9 *mf*

16 *p*

3.

IV

17 *mf*

24 *p*

4.

IV

25 *f*

32 *p*

5.

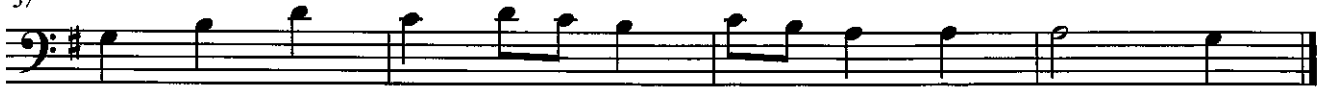
33



IV

37

*mf*



*p*

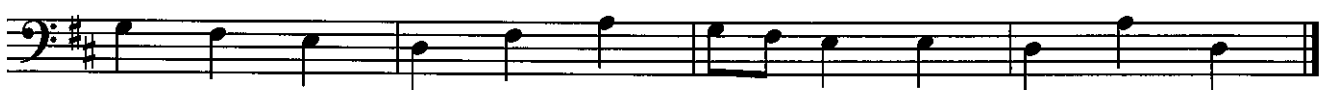
6.

41



IV

45



*mf*

7.

49



IV

53

*mf*



*p*

8.

57



*p*

IV

61



*f*

# NYSSMA Sight Reading Level:IV

1. Time Signature: 4/4, 2/4, 3/4
2. Range: Octave (Usually Do to Do)
3. Intervals: Do-Mi-Sol (Ascending on quarter notes)  
Do-Sol (Ascending on quarter notes)
4. Rhythms: Half notes ( ), Quarter notes ( ), and Eighth notes ( )
5. Rests: Quarter rest ( )

1.

IV

5

*mf*

*f*

Detailed description: This exercise consists of two staves of music. The first staff begins with a treble clef and a 4/4 time signature. It contains five measures of music. The first measure starts with a mezzo-forte (*mf*) dynamic. The second staff continues from the first, starting with a forte (*f*) dynamic. The music features quarter notes, eighth notes, and quarter rests.

2.

IV

9

*mf*

13

*p*

Detailed description: This exercise consists of two staves of music. The first staff begins with a treble clef, a key signature of two sharps (F# and C#), and a 3/4 time signature. It contains five measures of music, starting with a mezzo-forte (*mf*) dynamic. The second staff continues from the first, ending with a piano (*p*) dynamic. The music features quarter notes, eighth notes, and quarter rests.

3.

IV

17

*mf*

*p*

21

Detailed description: This exercise consists of two staves of music. The first staff begins with a treble clef, a key signature of three flats (Bb, Eb, and Ab), and a 4/4 time signature. It contains five measures of music, starting with a mezzo-forte (*mf*) dynamic. The second staff continues from the first, ending with a piano (*p*) dynamic. The music features quarter notes, eighth notes, and quarter rests.

4.

IV

25

*f*

29

*p*

Detailed description: This exercise consists of two staves of music. The first staff begins with a treble clef, a key signature of two flats (Bb and Eb), and a 2/4 time signature. It contains five measures of music, starting with a forte (*f*) dynamic. The second staff continues from the first, ending with a piano (*p*) dynamic. The music features quarter notes, eighth notes, and quarter rests.

5.

33 *mf*

37 *p*

IV

6.

41 *f*

45 *mf*

IV

7.

49 *mf*

53 *p*

IV

8.

57 *p*

61 *f*

IV



Level V Sight Reading

Keys: C, F, G, D, Eb

Tempo: quarter note = 72

Time Signatures: 4/4, 2/4, 3/4

Range: 9<sup>th</sup> (example- c to d above high c)

- Intervals:
1. ascending Do-Mi-Sol
  2. ascending Do-Sol
  3. descending Sol-Mi-Do
  4. descending Sol-Do
  5. ascending Sol-Ti-Re
  6. descending Do-Sol

Rhythm of Interval: quarter notes, quarter and half notes

Rhythms:

Accidentals: none

Rests: quarter, eighth } 7

Dynamics: mf, p, f, mp

*mf = med loud*      *f = loud*  
*mp = med soft*      *p = soft*

①

V

*mp* *mf*

②

V

*f*

③

V

*mf*

④

V

*mp* *f*

⑤

V

*f* *p*

⑥

V

*p* *mp*

7) *mf* *f*

V

Exercise 7: Treble clef, key signature of two flats (B-flat, E-flat), 4/4 time. The melody starts with a mezzo-forte (*mf*) dynamic and ends with a forte (*f*) dynamic. A 'V' marking is present to the left of the staff.

8) *p* *mp*

V

Exercise 8: Treble clef, key signature of one flat (B-flat), 2/4 time. The melody starts with a piano (*p*) dynamic and ends with a mezzo-piano (*mp*) dynamic. A 'V' marking is present to the left of the staff.

9) *f*

V

Exercise 9: Treble clef, key signature of one sharp (F-sharp), 4/4 time. The melody starts with a forte (*f*) dynamic. A 'V' marking is present to the left of the staff.

10) *p*

V

Exercise 10: Treble clef, key signature of two sharps (F-sharp, C-sharp), 4/4 time. The melody starts with a piano (*p*) dynamic. A 'V' marking is present to the left of the staff.

11) *mf* *f*

V

Exercise 11: Treble clef, key signature of two flats (B-flat, E-flat), 3/4 time. The melody starts with a mezzo-forte (*mf*) dynamic and ends with a forte (*f*) dynamic. A 'V' marking is present to the left of the staff.

12) *f*

V

Exercise 12: Treble clef, key signature of one sharp (F-sharp), 2/4 time. The melody starts with a forte (*f*) dynamic. A 'V' marking is present to the left of the staff.

⑬ 20

V *mf* *f*

⑭ V *mp*

⑮ V *mf* *mp*

⑯ V *mp*

⑰ V *mf* *f*

⑱ V *f*

⑲ V *p*

(20) *mf* *f*  
V

Musical notation for exercise 20, measures 1-2. Treble clef, 4/4 time, key signature of one flat. Handwritten 'V' and dynamics 'mf' and 'f' are present.

(21) *p* *mp*  
V

Musical notation for exercise 21, measures 1-2. Treble clef, 3/4 time, key signature of two flats. Handwritten 'V' and dynamics 'p' and 'mp' are present.

(22) *p*  
V

Musical notation for exercise 22, measures 1-2. Treble clef, 3/4 time, key signature of two flats. Handwritten 'V' and dynamic 'p' are present.

(23) *mp*  
V

Musical notation for exercise 23, measures 1-2. Treble clef, 3/4 time, key signature of two sharps. Handwritten 'V' and dynamic 'mp' are present.

(24) *mf* *f*  
V

Musical notation for exercise 24, measures 1-2. Treble clef, 4/4 time, key signature of one sharp. Handwritten 'V' and dynamics 'mf' and 'f' are present.

(25) *mp*  
V

Musical notation for exercise 25, measures 1-2. Treble clef, 2/4 time, key signature of two flats. Handwritten 'V' and dynamic 'mp' are present.

(26) *mf*  
V

Musical notation for exercise 26, measures 1-2. Treble clef, 3/4 time, key signature of one flat. Handwritten 'V' and dynamic 'mf' are present.

27)   
V *f*

28)   
V *mp*

29)   
V *f*

30)   
V *mf* *f*  
V *mf*

31)   
V *f*

32)   
V *mp*

33)   
V *mf*

34

4) *mp*

35

*p mp*

36

*mf*

## Level VI Sight Reading

Keys: C, F, G, D, Eb

Tempo: quarter note = 72, dotted quarter = 60

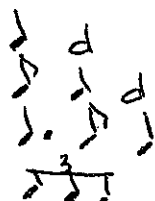
Time Signatures: 4/4, 2/4, 3/4, 6/8

Range: 9<sup>th</sup> (example- c to d above high c)

- Intervals:
1. ascending Do-Mi-Sol
  2. ascending Do-Sol
  3. descending Sol-Mi-Do
  4. descending Sol-Do
  5. ascending Sol-Ti-Re
  6. descending Do-Sol
  7. ascending and descending 4<sup>th</sup> and 5<sup>ths</sup>

Rhythm of Interval: quarter notes, quarter and half notes, quarter, dotted quarter and eighth note patterns

Rhythms:



Accidentals: none

Rests: quarter, eighth

Dynamics: mf, p, f, mp, crescendo, decrescendo

*p* = soft  
*f* = loud  
 Crescendo = getting louder  
 decrescendo = getting softer





①

VI *p* *mp*

②

VI *mf* *f* *mp*

③

VI *mf* *f* *mp*

④

VI *mp*

⑤

VI *mf* *f*

⑥

VI *mf* *f*

⑦

VI mp f

⑧

VI mp

⑨

VI mf f mf

⑩

VI p

⑪

VI mp mf p

⑫

VI mf

⑬

VI *mf* *f*

*mf*

⑭

VI *mp*

*mp*

⑮

VI *mf* *f*

*mp* 3 3

⑯

VI *f* *mp*

⑰

VI *mp*

*mp*

⑱

VI *mf* *f*

(19) *mp* **VI** *mf*

(20) **VI** *mf*

(21) **VI** *p* *mf* *p*

(22) **VI** *mf* *f*

(23) **VI** *mf* *3*

(24) **VI** *p*

25) Musical notation for measures 25-26. The first staff is in treble clef with a key signature of one sharp (F#) and a 2/4 time signature. It contains a melodic line with dynamics *mf* and *f*. The second staff is in treble clef with a key signature of one sharp and a 2/4 time signature, containing a bass line with dynamics *mf*. The number 29 is written in the top right corner.

26) Musical notation for measures 27-28. The first staff is in treble clef with a key signature of one sharp and a 2/4 time signature. It contains a melodic line with dynamics *mp* and triplets. The second staff is in treble clef with a key signature of one sharp and a 2/4 time signature, containing a bass line.

27) Musical notation for measures 29-30. The first staff is in treble clef with a key signature of two flats (Bb, Eb) and a 2/4 time signature. It contains a melodic line with dynamics *mf*. The second staff is in treble clef with a key signature of two flats and a 2/4 time signature, containing a bass line.

28) Musical notation for measures 31-32. The first staff is in treble clef with a key signature of two flats and a 2/4 time signature. It contains a melodic line with dynamics *mf*. The second staff is in treble clef with a key signature of two flats and a 2/4 time signature, containing a bass line with dynamics *f*.

29) Musical notation for measures 33-34. The first staff is in treble clef with a key signature of one sharp and a 2/4 time signature. It contains a melodic line with dynamics *mf* and *f*. The second staff is in treble clef with a key signature of one sharp and a 2/4 time signature, containing a bass line with a triplet.

30) Musical notation for measures 35-36. The first staff is in treble clef with a key signature of two sharps (F#, C#) and a 2/4 time signature. It contains a melodic line with dynamics *mp*. The second staff is in treble clef with a key signature of two sharps and a 2/4 time signature, containing a bass line.



37 *mf* VI 31

38 *p* VI

39 *f* VI

40 *mf* VI

41 *mf* *f* *mf* VI

42 *mf* *f* VI

43) *VI mf* *f* *p*

44) *VI f*

45) *VI mf* *f*

46) *VI mp*

47) *VI mf*

48) *VI p*